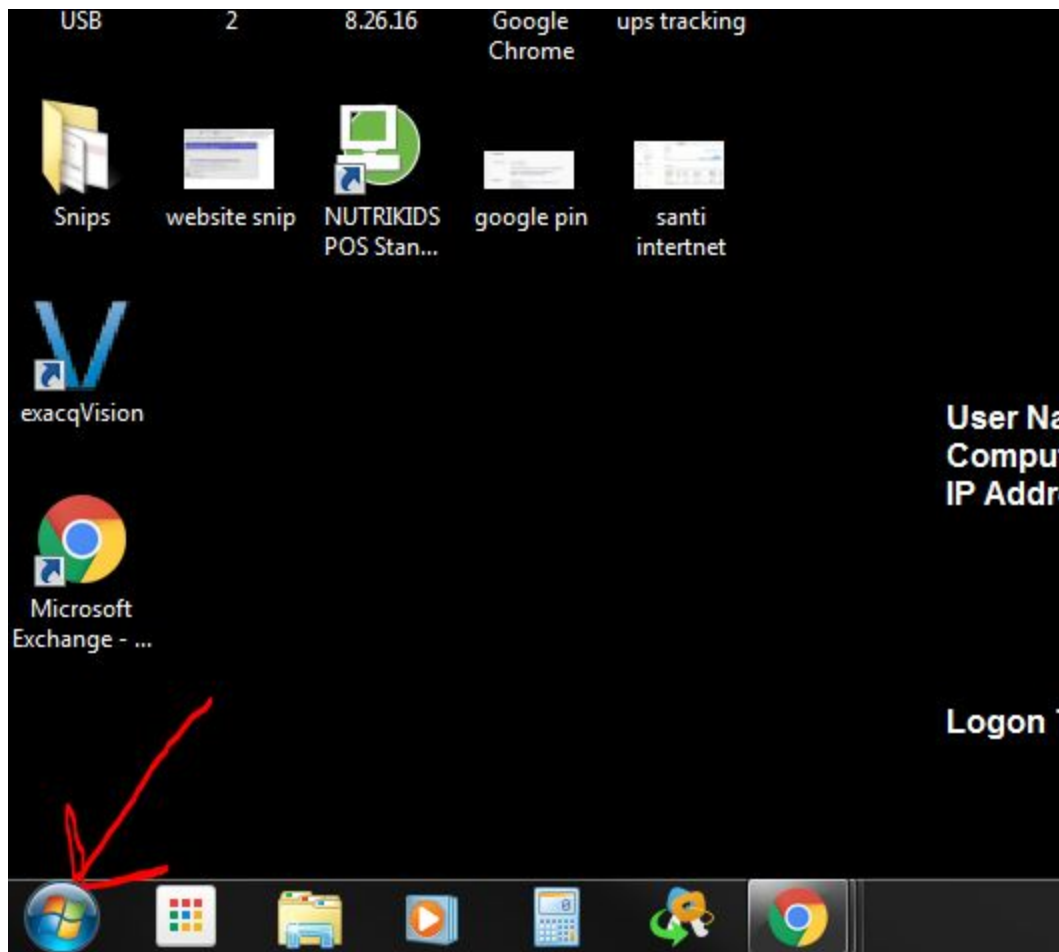
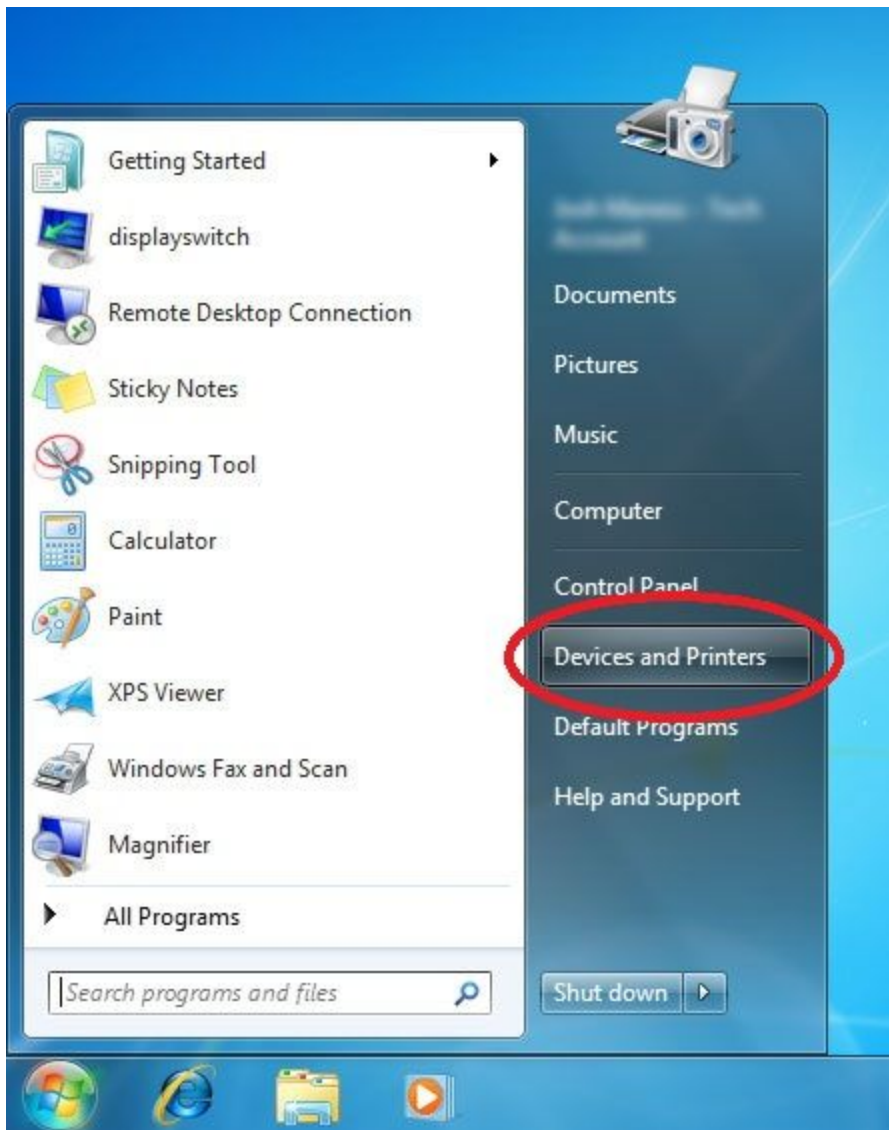


Here is an easy way to add a printer of your choice:

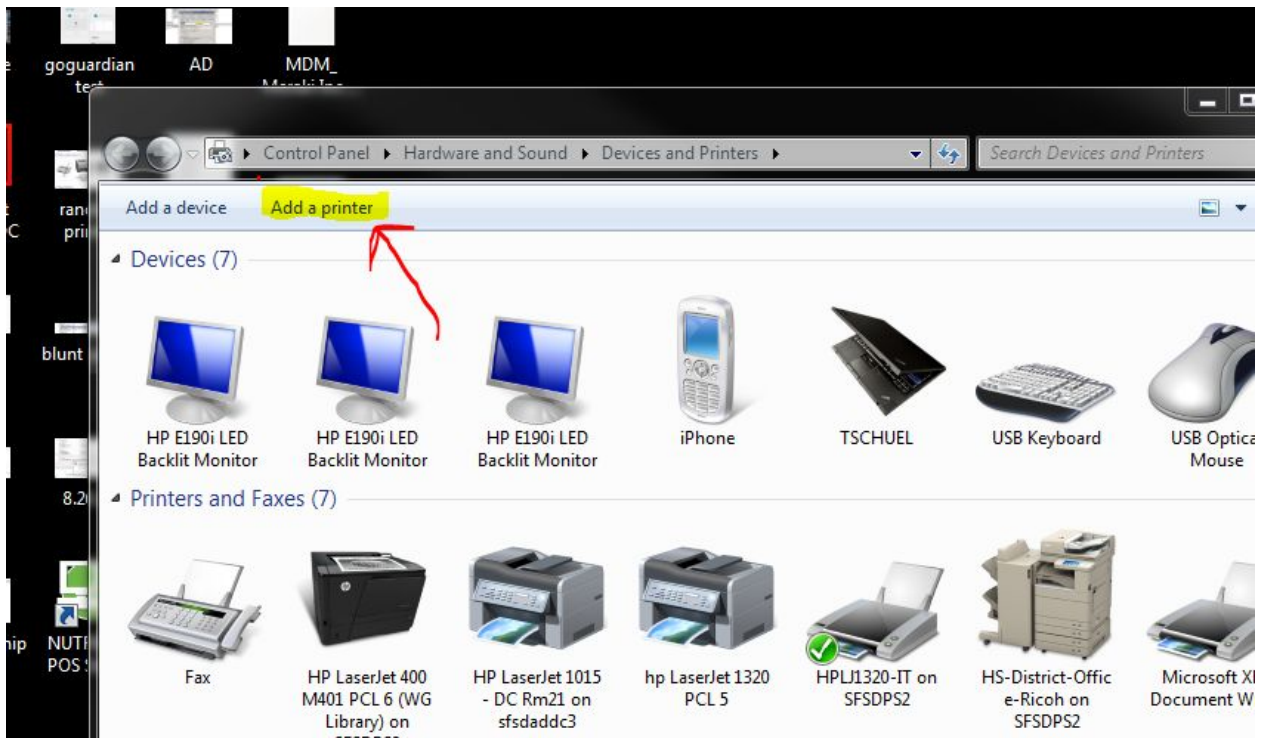
1. Click the Windows Start button



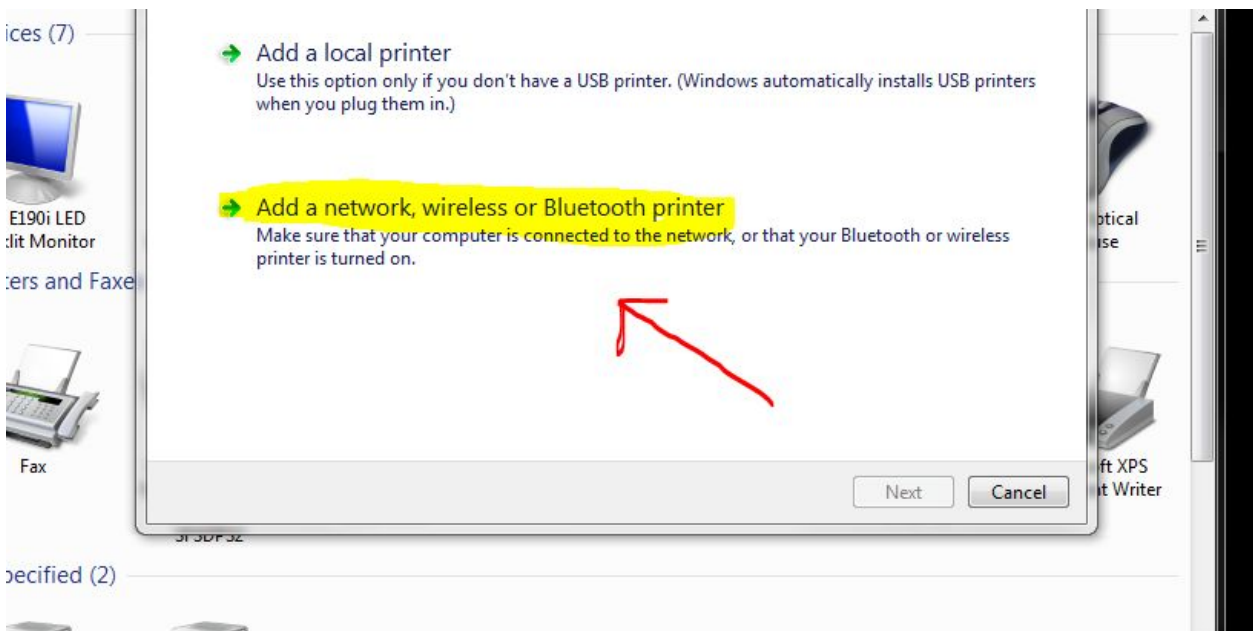
2. Click on Devices and Printers



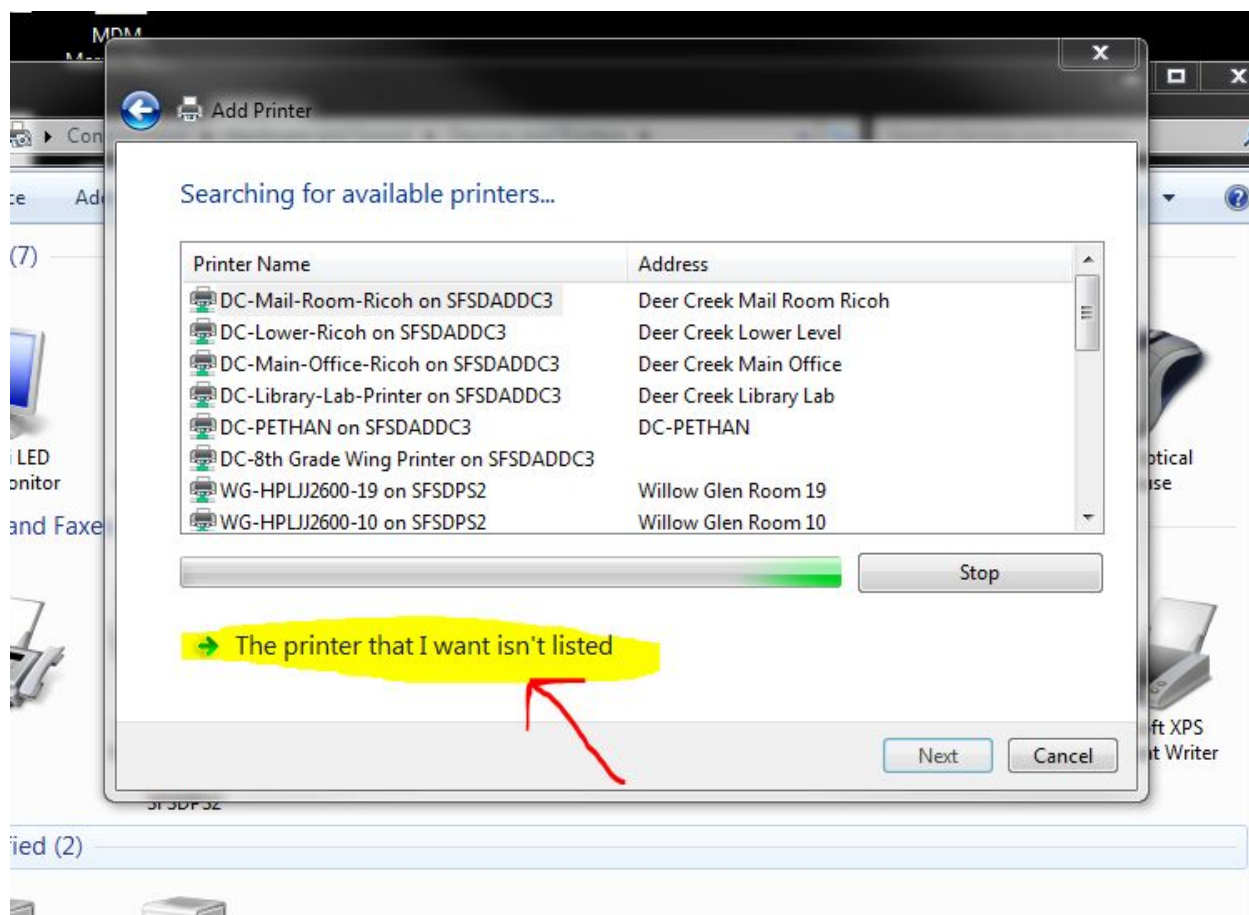
3. Click Add a printer



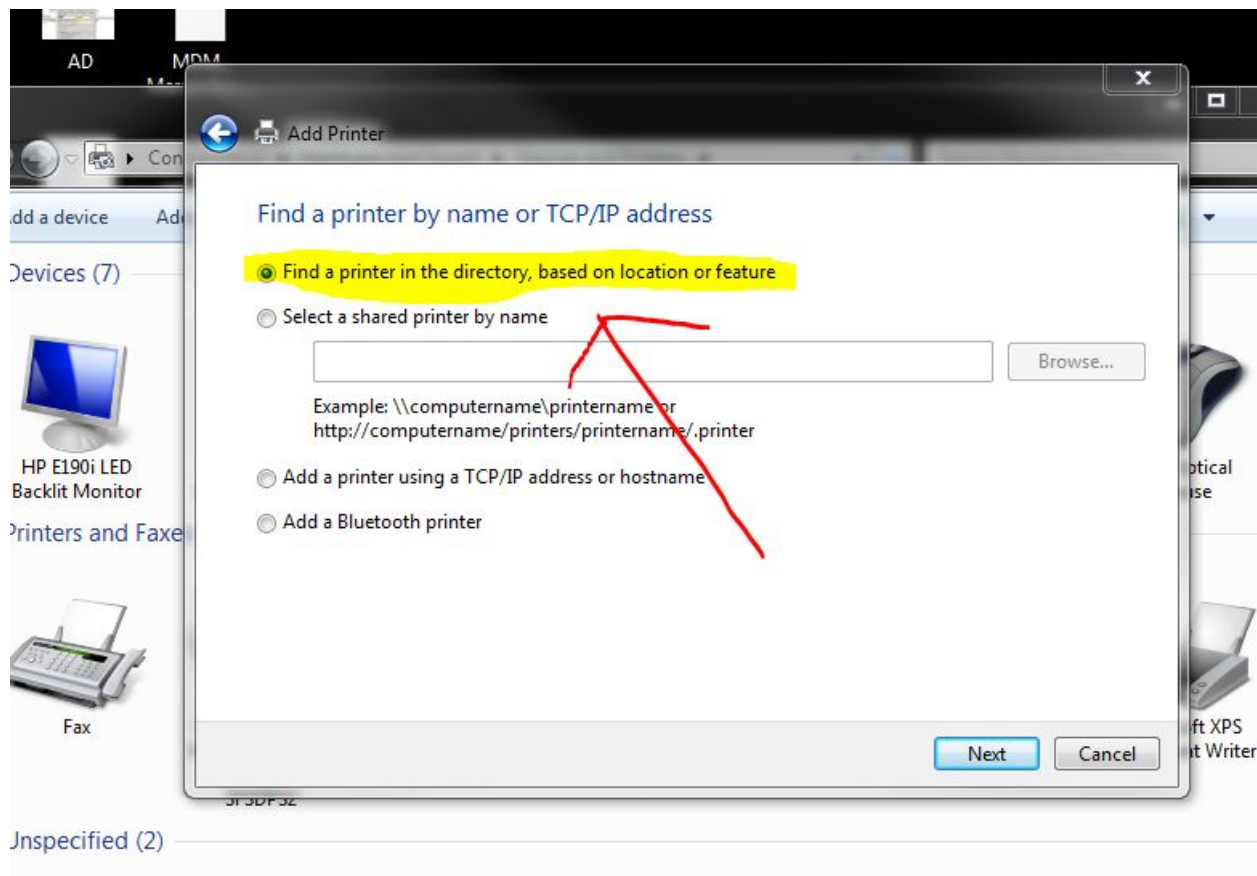
4. Click Add a network, wireless or Bluetooth printer.



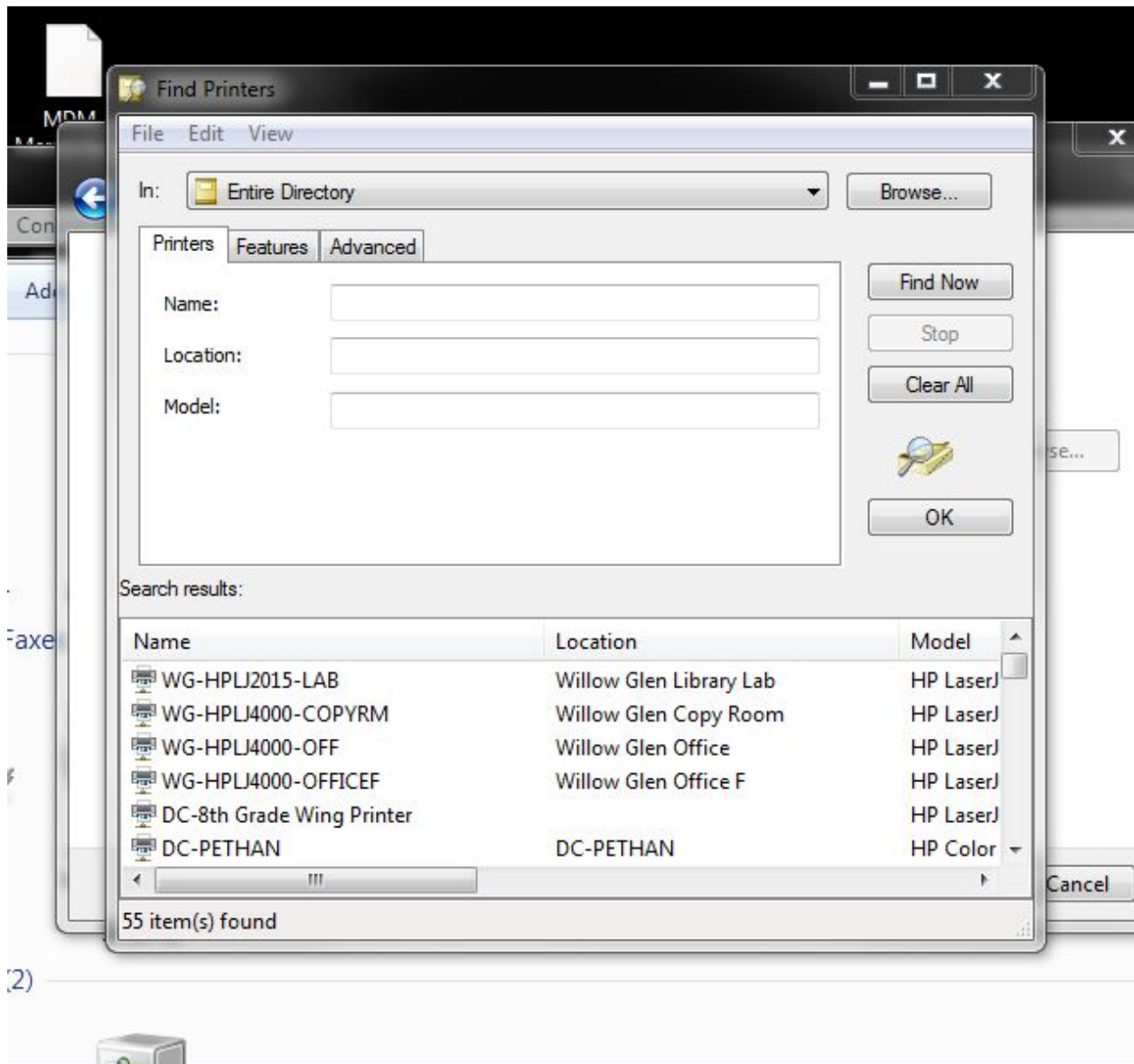
5. If the printer you wanted to add was not in the box that comes up click “The printer that I want isn’t listed.”



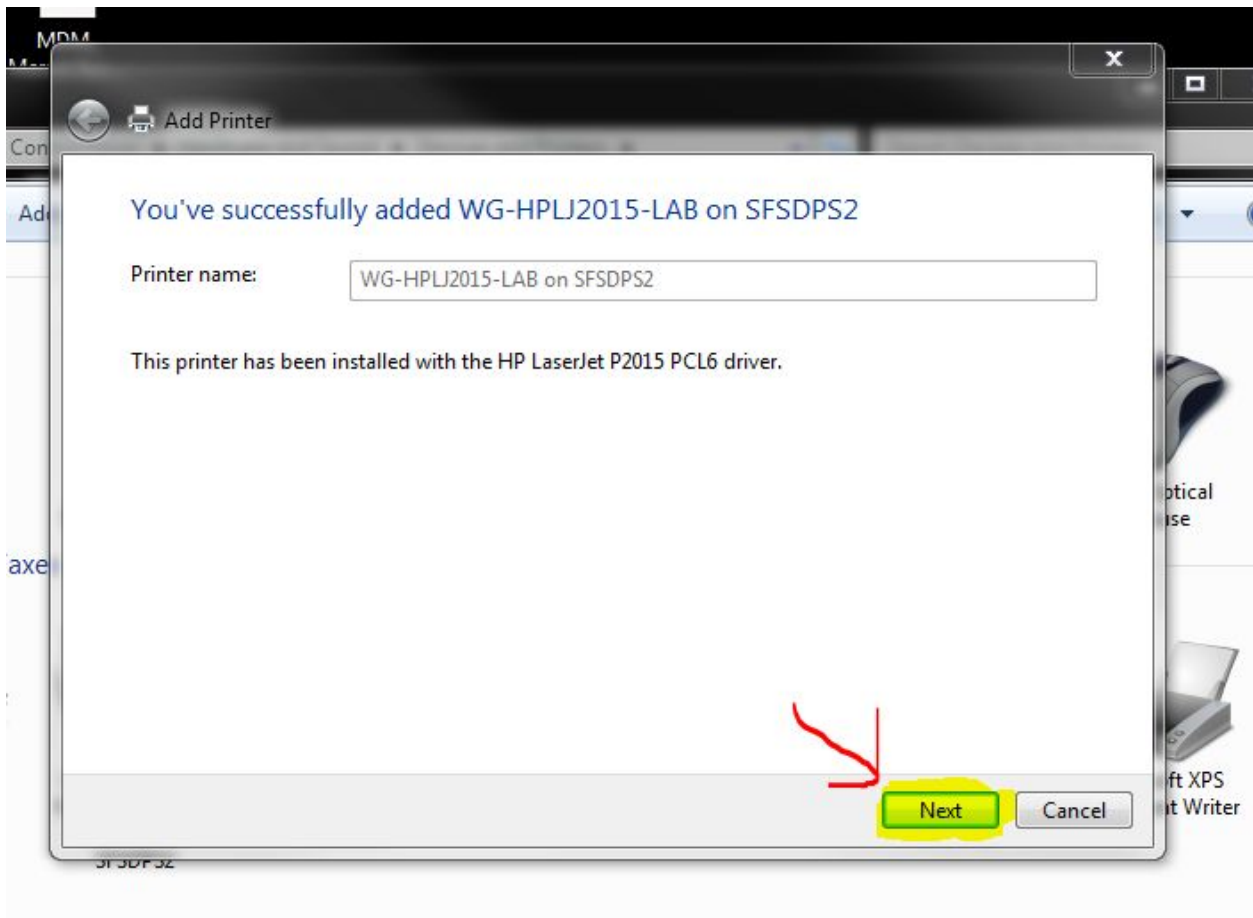
6. Click "Find a printer in the directory, based on location and feature." Then click Next



7. Scan the directory for the printer you would like, then double click

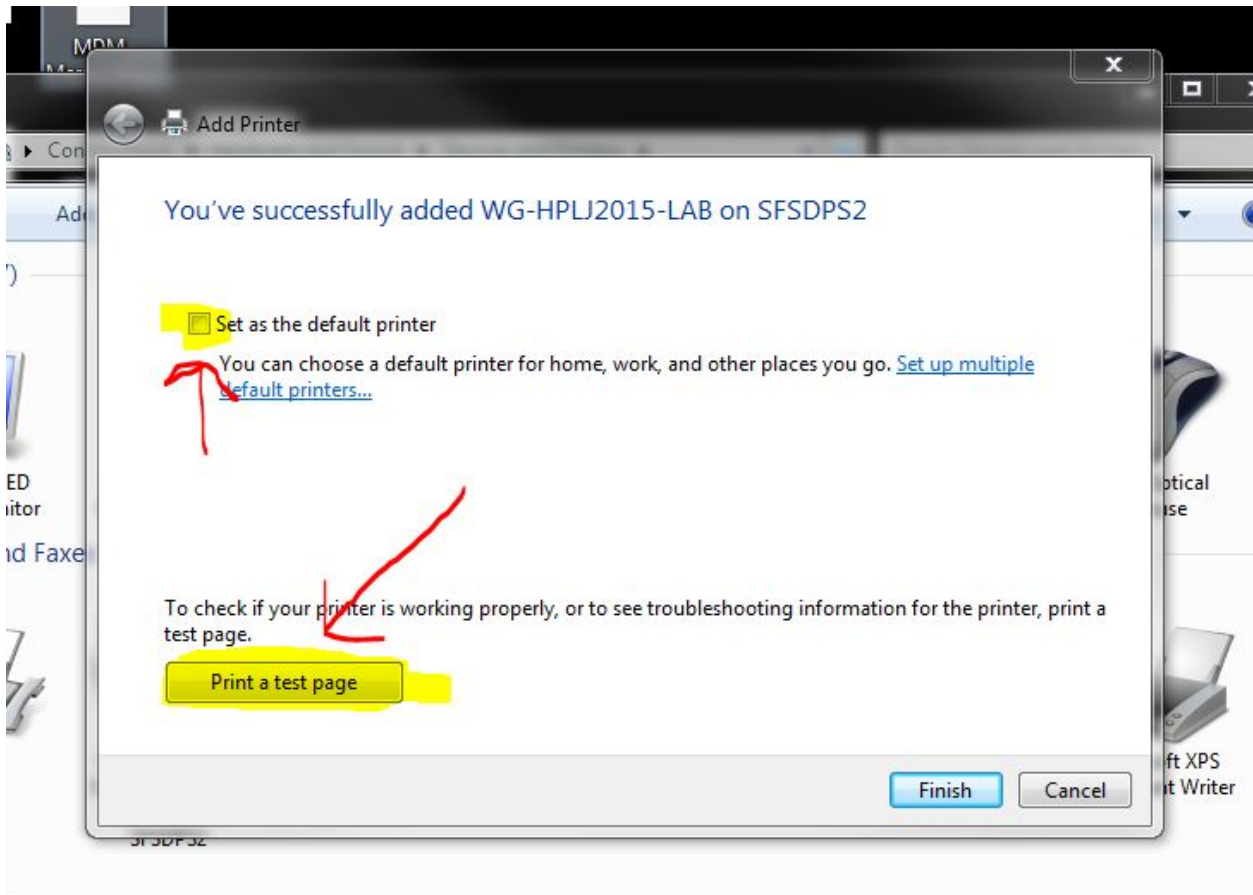


8. At this time the printer server will add the drivers. Once this is complete hit next





9. Now you can choose to set this printer as the default printer and or print a test page.





10. Once you have successfully printed a test page hit finish, and you are all set.

